

## Automatic Radio Mfg. Co., Inc.

**Model:** tom thumb camera

**Chassis:**

**Year:** Pre 1950

**Power:**

**Circuit:**

**IF:**

**Tubes:**

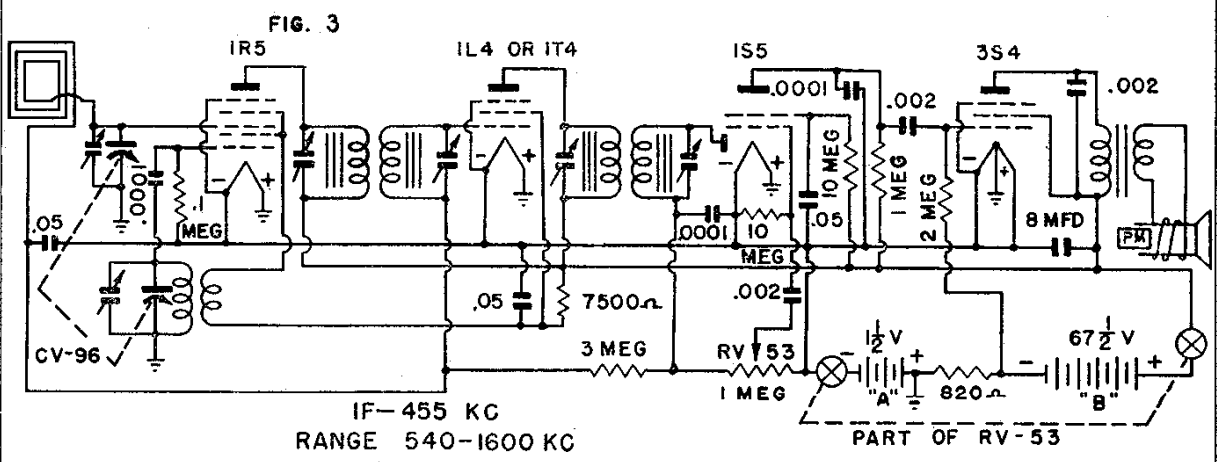
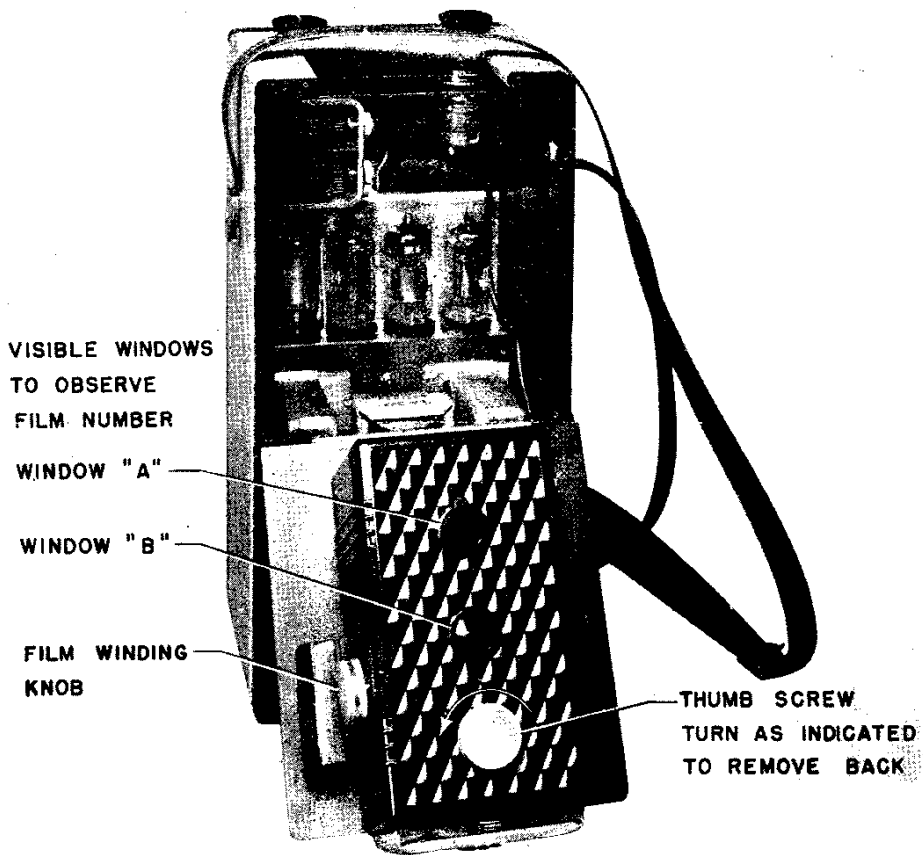
**Bands:**

### Resources

[Riders Volume 18 - AUTOMATIC 18-4](#)

[Riders Volume 18 - AUTOMATIC 18-5](#)

[Riders Volume 18 - AUTOMATIC 18-6](#)



**THE FOLLOWING PROCEDURE SHOULD BE FOLLOWED TO REMOVE CHASSIS FROM CABINET FOR REPAIRING.**

1. Remove knobs.
2. Remove bottom screw on back located below tuning dial window.
3. Remove back by dropping down slightly and lifting out.
4. Remove license label.
5. Unsolder speaker and bottom battery terminal leads.
6. Swing camera down.
7. Remove screw located in center of terminal board.
8. Drop chassis carefully so that control shafts clear inside top of cabinet and swing out.

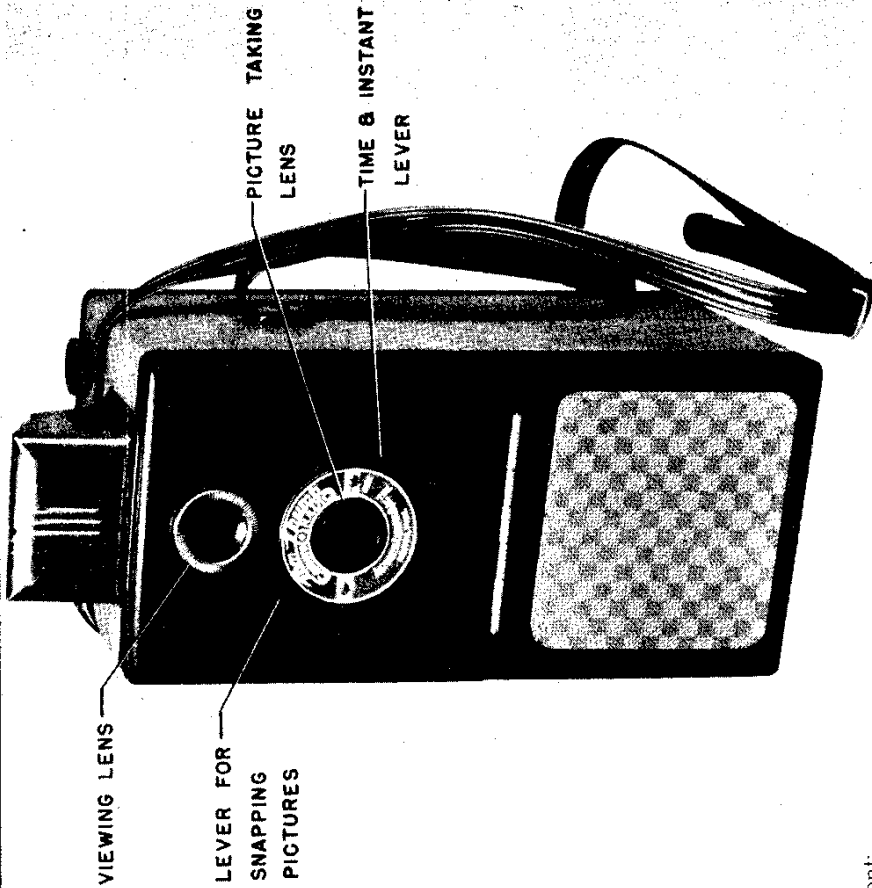


FIG. 1

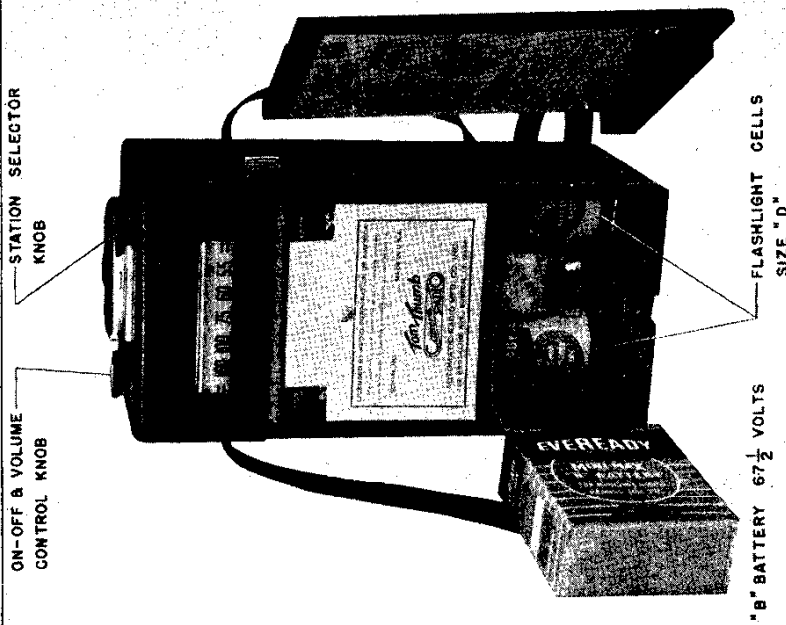


FIG. 2

**Batteries Required**

1 67 1/2 Volt "B" Battery. Use one of the following types, or equivalent:

- Eveready No. 467
- Burgess No. XX45
- Ray-O-Vac No. 4367
- Winchester No. 1710

2 Flashlight Cells. Size D. Use two of the following types, or equivalent:

- Eveready No. 950
- Burgess No. 2
- Ray-O-Vac No. 2LP
- Winchester No. 1511

**BATTERY INSTALLATION (See Figure 2)**

1. Remove bottom screw on back located below tuning dial window.
2. Remove back by dropping down slightly and lifting out.
3. Insert flashlight cells on each side of speaker frame as indicated in Figure 2.
4. Snap connector strip over "B" Battery terminals.
5. Place "B" battery over flashlight cells (See Fig. 2).
6. Replace Back.

NOTE: This radio cannot operate with back removed.

MODEL TOM THUMB  
CAMERA

AUTOMATIC RADIO MFG. CO., INC.

**FILM REQUIRED FOR CAMERA:****AGFA A8 OR EASTMAN 127 OR EQUIVALENT.****TO LOAD AND UNLOAD CAMERA (See Figure 3)**

Facing tuning dial, place thumb on camera top cover with other fingers on radio side and push camera away from knobs. An unlocking click will be heard as the camera hinges down and exposes all the necessary adjustments. Turn thumb screw to the left to remove back cover.

Always load and unload camera in shaded place, never in bright sunlight! Insert slotted end of spool into the winding knob at the top of camera. Then place film in empty receptacle at extreme opposite end. Fit ends of spool into the grooves (under film retainer spring). Push the roll down into the grooves which hold the roll. Then break seal on film and pull end towards empty spool. Thread end of film through widest side of slot in empty spool. Turn winding knob two or three times until paper rolls on empty spool. Replace back of camera. Be sure thumb screw is turned as far as it will go to be sure cover is on as tightly as possible.

**TO WIND FILM**

Suspend Camera-Radio in front of operator by means of adjustable shoulder strap so that camera lens faces subject to be photographed. Unlock camera by pushing camera top away from knobs as mentioned previously. The camera will hinge down and expose necessary controls.

Turn winding knob slowly and watch film pass red window "A". When the figure "1" appears in the center of Window "A", you are ready to take the first picture. Swing camera back into position again pressing the camera firmly towards the knobs until a slight click is heard. This indicates that the camera is properly locked in place. After taking this picture swing camera down again exposing control and wind knob slowly until figure "1" appears in red window "B". Then take second picture. After this picture is taken, turn knob until figure "2" appears in window "A". After snapping the picture, turn knob until figure "2" appears in window "B". In this manner 2 pictures are taken for each number appearing on the film roll — one in window "A", one in window "B". When number "8" appears in the center of window "B", you have taken 16 pictures. When you have taken all of the pictures, keep turning knob in same direction until the complete roll of film including the red paper is all wound on the top spool.

**TO REMOVE FILM**

Open back of camera as when loading. Then press down on spring holding film roll and lift out spool of film. Now, seal roll with piece of gummed paper attached to end of roll so that it will not unroll.

**HOW TO TAKE PICTURES**

Open cover at top by placing thumb and forefinger on bottom of cover and lift upward. Look down into ground glass enclosed under cover. Point lens of camera at object you want to photograph. Object you see reflected there will appear on your finished picture. By moving camera closer or further from object, you can gauge the proportions and size desired in finished print. When ready to photograph, hold camera steady; then press lever firmly and picture has been taken. **NOTE:** Always have sun behind you with object being photographed facing sun!

**SHUTTER**

The shutter has been carefully adjusted to give you maximum excellent results for all standard shots! It has also been regulated to enable you to take clear, clean photographs of landscapes, groups, portraits, and "action shots." To adjust shutter for instant or time exposure, merely move indicator at left of camera to either INST. or TIME.

**FOR INSTANTANEOUS PICTURES**

Move indicator to INST. Grasp Camera-Radio firmly. Sight object to be photographed in ground glass view finder. **HOLD CAMERA-RADIO STEADY.** Then press shutter lever down firmly, and the picture is taken.

**TIME EXPOSURE**

Move indicator to "TIME". Place Camera-Radio on a solid support (a table or bench) so that Camera-Radio will not move. (Never hold Camera-Radio in hands for time shot.) **Then press shutter lever and hold down until you have counted the required number of seconds** for exposure desired. (Five seconds usually being ample, depending upon lighting conditions.) Then picture is completed . . . If you wish to return to INST. daylight shots, push lever back to INST.

**IMPORTANT:** To obtain best results, subject to be photographed should be at least 8 feet away from camera.

**"LARGER" CONTACT PRINTS**

Most photo finishers throughout the country are equipped with contact enlargement printers that produce approximately 3 1/4"x4" prints from the negatives you get with this camera.

Retail prices for these enlarged prints vary in different sections of the United States. However, in most cases they cost only slightly more than ordinary quality prints. See your dealer for further information.

**INSTRUCTIONS**

- Be sure lenses are clean. Use soft, clean cloth.
- Keep interior of camera free from dust.
- Be sure cover is tightly closed before taking picture.
- Be sure film is wound as tightly as possible before opening camera to remove film.